



FALCON

R I T Z

Discover the Pinnacle of Modern Living



In the heart of metropolis



Discover Falcon Ritz: Boasting exquisite 3BHK apartments that epitomize luxury, comfort, and convenience while offering spacious interiors.



GALI HIGH LIVING



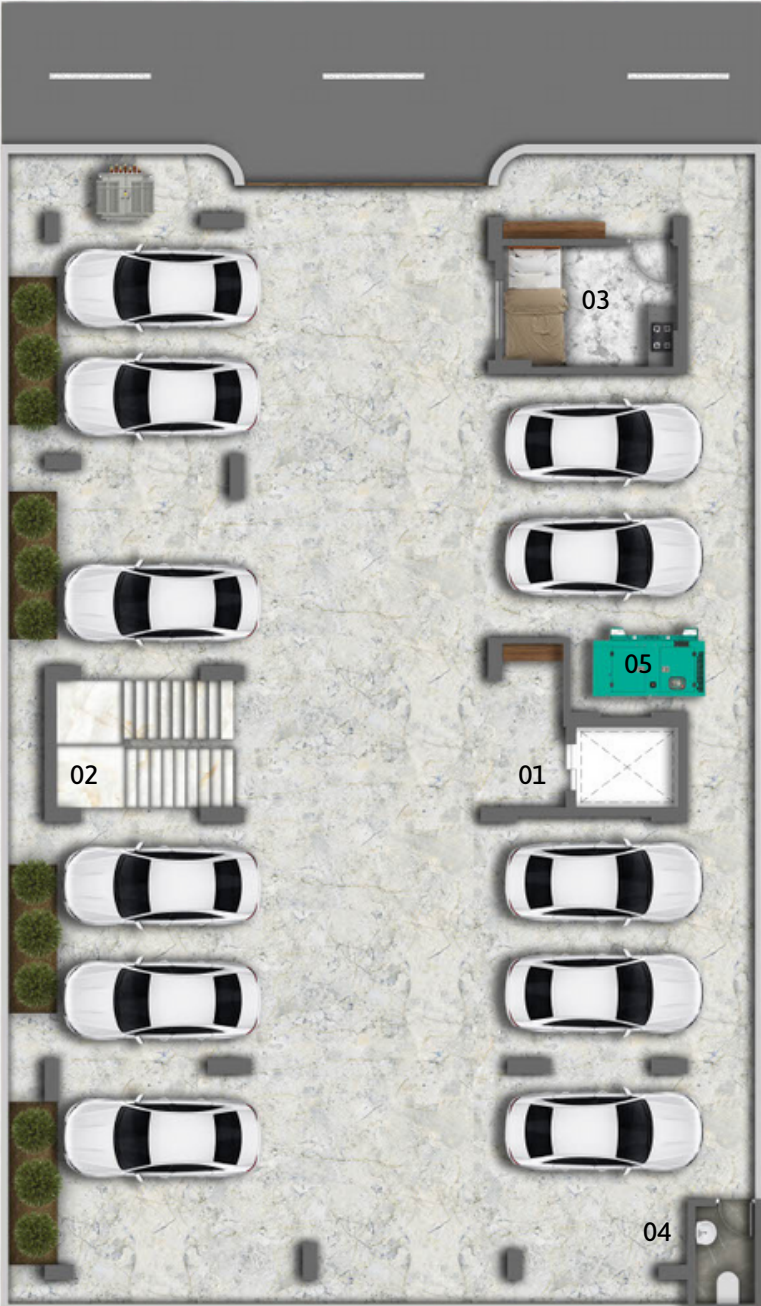
***Gali High Living**, located in Bengaluru, is a frontrunner in luxury construction. We specialize in delivering innovative, high-quality projects with a steadfast commitment to client satisfaction. Our visionary ideals and dedicated in-house architecture firm **Gali Associates** collaborate to turn dreams into extraordinary living spaces, turning your vision of luxury living into a reality.*



PARKING FLOOR PLAN



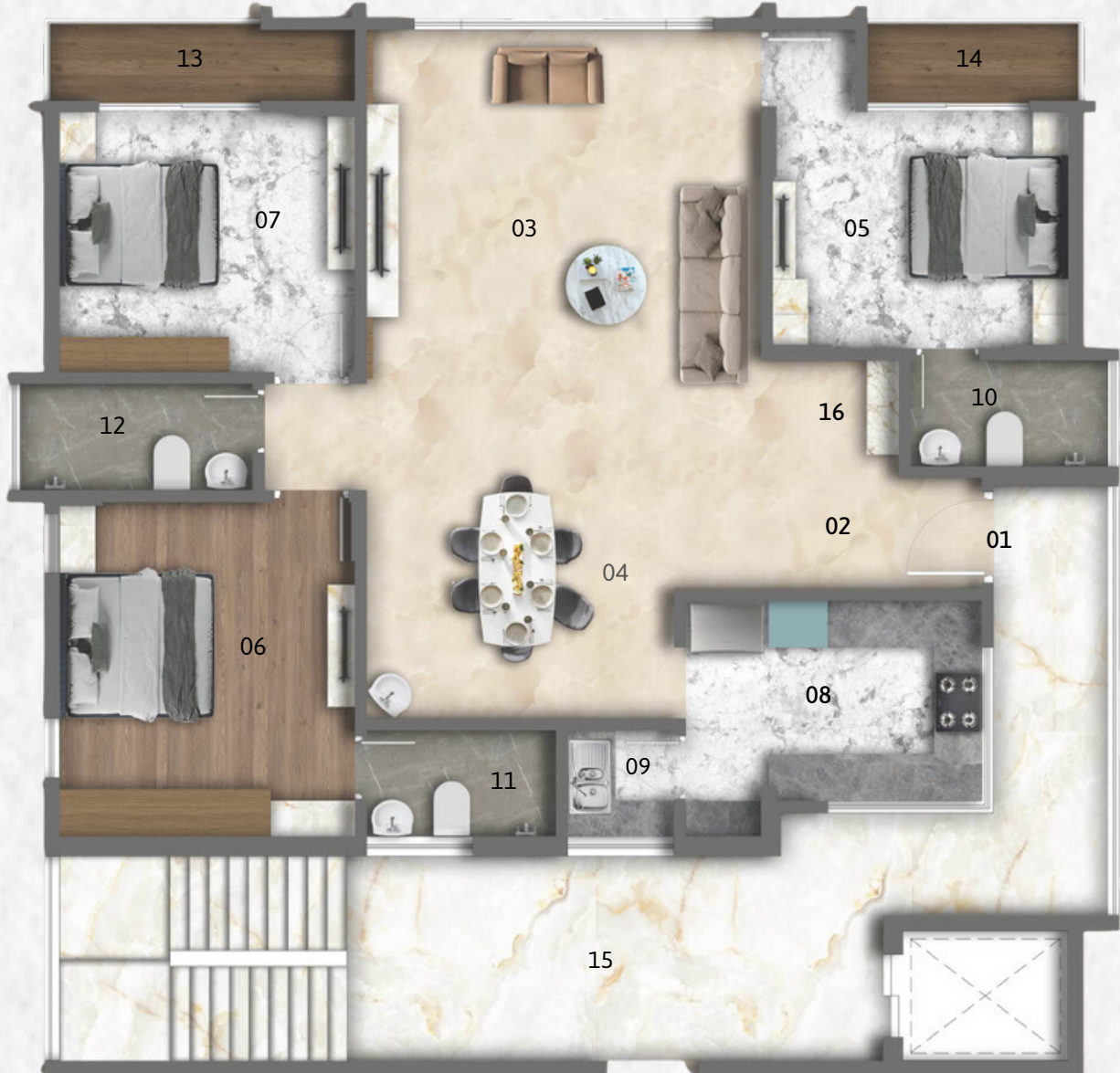
TYPICAL FLOOR PLAN



- Parking floor**
- 01 Lift area
 - 02 Stair case
 - 03 Servant room
 - 04 Toilet
 - 05 DG set



"A" Wing 3BHK Plan (2050sq.ft)



- 01 Entrance
- 02 Foyer-12'6"X4'8"
- 03 Living-16'8"X19'8"
- 04 Dining-13'X9'8"
- 05 Master Bedroom-12'6"X14'2"
- 06 Bedroom 1-12'6"X10'
- 07 Bedroom 2-12'6"X11'
- 08 Kitchen-12'6"X8'6"
- 09 Utility-4'6"X4'6"
- 10 Toilet 1-8'X4'6"
- 11 Toilet 2-8'X4'6"
- 12 Toilet 3-9'10"X4'6"
- 13 Balcony 1-12'11"X3'3"
- 14 Balcony 2-8'11"X3'3"
- 15 Central Corridor-20'X8'8"
- 16 Pooja space

"B" Wing 3BHK Plan (1900sq.ft)



- 01 Entrance
- 02 Living-18'X16'4"
- 03 Dining-13'X10'10"
- 04 Master Bedroom -12'4"X14'
- 05 Bedroom 1-11'2"X11'11"
- 06 Bedroom 2-12'6"X11'4"
- 07 Kitchen-11'2"X9'2"
- 08 Utility-9'4"X4'4"
- 09 Toilet 1-4'8"X7'9"
- 10 Toilet 2-7'4"X4'6"
- 11 Toilet 3-8'X4'6"
- 12 Balcony 1-13'5"X5'
- 13 Central Corridor-20'X8'8"
- 14 Pooja space
- 15 MB Dressing area
- 16 Bedroom 1 Dressing area

Amenities



Landscape



Party Hall



Cauvery Water
& Borewell Water



Gym, Yoga
& Meditation Room



CCTV in
Common Areas



Power Backup



Car Parking



Terrace Zen Garden
& Barbeque Area





"Discover Your Dream HEDMFToday"



Specification



- Vaastu Compliant Homes
- Cement - Ramco Supercrete/Ultratech
- Steel/Concrete - TMT 550D Grade/M25 Grade Mix
- External Walls - 8" THK Concrete Blocks
- Internal Walls - 4" and 6" THK Concrete Blocks
- Roof Height - 10.5 Feet Clear Height from Floor to Ceiling
- Windows - 6 Feet high wood/white finish UPVC with toughened glass shutters
- Flooring - Vitrified Tiles Somany make
- Master Bedroom/Balcony Flooring - Wooden finish Tiles
- Bathroom walls & floor - Vitrified Tiles Somany make
- Parking/Corridors/Staircase - Granite Flooring
- Bath Fittings- Grohe/Equivalent
- Sanitary Fittings- Jaguar/Equivalent
- Elevator - Schindler 10 Passengers
- Switches - Legrand/Equivalent
- Power Backup - Kirloskar DG set
- 5kva Max Load Per Apartment
- Door Frames- 8 Feet high Teak Wood Frames with Polish
- Main Door - 8 Feet Teak Wood shutter with Polish
- Internal Doors - 8 Feet Veneer flush doors with Polish
- Wires - Finolex/Gold Medal
- Plumbing CPVC/PVC -Supreme/Ashirwad
- Sump - 30,000 Litre Capacity RCC structure
- Overhead Tank - 2X5000 Litre Capacity

"Construction progress at site"





GALI HIGH LIVING

Office Address:

204, 2nd floor, SR Sapphire, kasturi nagar,
Bengaluru - 560043

Site Location:

Site No: 4C-414, OMBR Layout,
Banaswadi, Bengaluru - 560043



+91-9606037011



www.gali.co.in